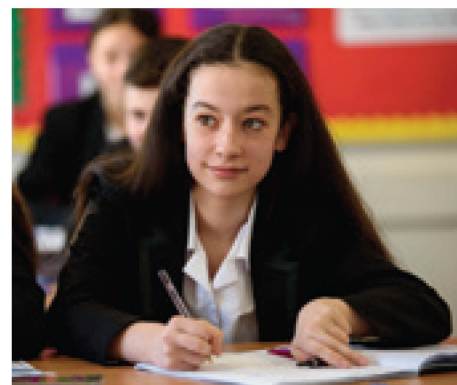




Altwood
Church of England School





“The headteacher’s strong and clear vision, which is highly aspirational, permeates the school. As a result, the school’s values of compassion, ambition, understanding and respect are evident.” Ofsted

WELCOME

I would like to warmly welcome you to Altwood Church of England School. This prospectus aims to provide you with an invaluable insight into our school and answer many of the questions you may well have.

As Headteacher of Altwood I am very proud of the happy but purposeful atmosphere that makes our school so special; it is our intention to provide every young person who attends our school with the support, development and structure to succeed academically. In addition to this we truly value every student and are always looking for ways to provide them with opportunities to develop into a well-rounded individual. Whether this be through drama, music, sport, charity fund-raising or other means. Every student has their own particular talents, and it is important that these talents are identified, nurtured and developed.

When you visit Altwood I expect you to be impressed by the friendly, positive and supportive community atmosphere and I hope you will experience this soon. In addition to our Open Evening there are a number of ‘Open Mornings’, which you are welcome to join us on, but if these aren’t convenient to you please contact us to arrange a time to suit you.

When you visit us, I am confident you will encounter the genuine passion for success which exists in our school. Our students are excited by learning opportunities which challenge them on a daily basis and inspire them to both develop their understanding and progress their learning. Our staff are highly experienced, committed and set on achieving the best for every student. As a result, we are a very successful and popular school and one that is fully committed to further improvement.

As a church school our Christian values are very important to us. We welcome all, value all, respect all and expect the best from everyone. Standards are therefore exceptionally high and everyone at Altwood is expected to aim for excellence in all that they do.

When a child joins our school community, we engage in a partnership built around trust and support. Your child will follow a broad and balanced curriculum, which will enable them to make the most of every opportunity that comes their way in order to achieve great success, whether this be academically, spiritually, morally, socially or culturally.

Each year we aim ever higher for our school community and I am confident that we will continue to be a school that Maidenhead and the surrounding area can be proud of. I am sure all who attend Altwood will continue to thrive and prosper. As a dynamic, forward looking and ambitious school, I hope that your child and you will wish to become a part of our success at Altwood.

I look forward to meeting with you in the future.



Neil Dimbleby
Headteacher



“Staff and pupils speak highly of the quality and effectiveness of leadership.” Ofsted



“The behaviour of pupils is good.” Ofsted



“Pupils have responded positively to leaders’ increasingly high expectations.” Ofsted

OUR COMMUNITY

We are a Church school founded upon Christian values.

As a Church school we:

- welcome all, value all, respect all, and have excellence as our goal;
- celebrate the fact that everyone has God-given gifts and talents and embrace the responsibility we have for enabling students to make the most of these gifts and talents so that they can go on to achieve highly;
- provide extensive opportunities for spiritual development and personal support;
- value our rich and diverse school community because it is made up of young people who are of the Christian faith, other world faiths and of no particular faith; all have a significant part to play in our society;
- have a strong House system to support personal and academic outcomes;
- develop character and culture through House and personal development opportunities.

“The Altwood Parliament provides pupils with the opportunity to air opinions, discuss school issues and provide school leaders with their views. This is welcomed and enjoyed by those involved and understood by many others as an effective way of learning about democracy in practice.” Ofsted

OUR STANDARDS

All our young people are expected to show their pride in belonging to their school community:

- working as hard as they can, not simply to fulfil their potential but to try and exceed all expectations that may exist in light of their prior academic performance;
- aspiring to excel in all that they do;
- wearing their uniform with pride;
- behaving in a way that shows that they have respect for themselves and a responsibility to show respect for others.

“Pupils and parents are positive about the support that the school provides.” Ofsted





“Positive relationships between pupils and with adults permeate the school. Pupils’ personal development is a strength of the school.” Ofsted



OUR STUDENTS

Altwood Church of England School students are in a league of their own; all our visitors comment on the positive and purposeful atmosphere that exists amongst our community. We want the young people of Altwood to leave us as the discerning, responsible leaders of the future, who will make a positive difference in our world.

Leadership is a very important part of life at Altwood. The House system provides the basis for extensive leadership opportunities and every student is encouraged to play an active part in one way or another. We view this as an important tool to prepare our young people for life beyond Altwood. They develop very many key skills whilst making an extremely positive contribution to their school community, the local community and the national/international community.

“The work in pupils’ books is well presented. This matches the attitudes to learning observed and the progress seen.” Ofsted



OUR CURRICULUM

Our approach to the curriculum is simple. We genuinely personalise the learning experience of our young people to meet their needs and match their aptitudes. This will be an area which will continue to develop in years to come to respond to the needs of our students.

If young people have the chance to fully develop, they are not only positioned to succeed in examinations but become life-long learners positioned to achieve in their future adult lives.

“Pupils currently in the school are making good progress. This is because teaching and assessment are allowing pupils to develop secure knowledge, understanding and skills in the subjects they study.” Ofsted

“The curriculum prepares pupils suitably for the next stage of their education, training or employment, and for life in modern Britain.” Ofsted



*“Pupils are proud of their school and the opportunities it provides for them.”
Ofsted*



“The school’s work to promote pupils’ personal development and welfare is good.” Ofsted



OUR STAFF



Our passionate and committed specialist staff are a genuine strength of the school. All staff are dedicated to provide appropriate opportunities to allow all students to develop and flourish, academically and personally. Our staff like our students are encouraged to be life-long learners, striving for excellence in all that they do and constantly updating their skills to be on the cutting edge of education practice.

“Pupils make good use of the feedback teachers provide to improve their knowledge, skills and understanding.” Ofsted

OUR PARENTS AND CARERS

At Altwood we work hard to develop a partnership with every parent and carer. We believe this is essential in order to support every student and enable them to achieve maximum success.

Our families are involved at all stages of a student’s time at Altwood. From the pastoral care received from their Head of House or the individual support, advice and encouragement from their tutor, to classroom teacher concerns or celebrations, we keep parents and carers up to date every step of the way. Parents’ Evenings provide invaluable face to face meetings every year, something that is so important in understanding the progress your child is making. Our online systems mean that students are able to complete and submit assignments and communicate seamlessly with their teachers. Parents are able to view their child’s key information around attendance and achievements, as well as viewing their latest academic reports. Our website, Twitter feed and Facebook page are all sources of the latest school news, important calendar dates, communications with parents and carers and all our latest publications. By working with parents and carers, we can maximise the chances of success for every child as well as making sure everyone feels part of, and belongs to, Altwood C of E School.



“Students display positive attitudes to learning and are proud to be members of the sixth form. All students spoken to during the inspection are aware of their responsibilities to be good role models for younger pupils and often help with reading and academic support.” Ofsted

OUR SIXTH FORM

Our Sixth Form students are composed, confident, articulate young men and women who have a clear sense of right and wrong and how they can make a difference in the world.

With high academic standards and impressive success rates, sixth form students are exceptionally well placed as they progress to university and in to the adult world. All our Sixth Form students are excellent role models for our younger students who value their support as buddies, study mentors, house leaders and prefects.



“Teachers’ strong subject knowledge, high expectations and careful planning extend and deepen students’ learning.” Ofsted

“Students behave well and their relationships with their teachers and their peers are positive.” Ofsted





Altwood Road
Maidenhead
Berks
SL6 4PU

t: 01628 622236
e: altwood@altwoodschool.co.uk
 [@altwoodschool](https://twitter.com/altwoodschool)
www.altwoodschool.co.uk

